

INTRODUCTION

This year the Moto-Ski parts catalogue is different in many ways, if compared to the ones published previously. The main differences of the "72" edition are:

a) Photography instead of line illustrations has been used (only the engine section and the electrical wiring diagrams are shown by means of line illustrations).

b) A new numbering system of 6 digits has been applied. It has to be noted that any of these new numbers are related to a specific group of the vehicle (Example: The series of numbers included between 800000 to 899999 is related to the engine).

c) The catalogue has been divided in 9 different sections. In order, these sections are:

SECTION 1

FRAME

This section includes the frame, the seat and the backrest.

SECTION 2

HOOD

This section includes the hood, the dash and the console.

SECTION 3

TRACK

This section includes the track, the suspension and the axles.

SECTION 4

SKI AND STEERING

This section includes the steering column, the steering linkages and the ski ass'y.

SECTION 5

TRANSMISSION

This section includes the drive and driven pulleys and the chain case and brake.

SECTION 6

ELECTRICAL

This section includes the electrical system's components and the different wiring diagrams.

SECTION 7

FUEL AND EXHAUST

This section includes the fuel system (the carburetor is a section of Section #8. Engine) and the exhaust system.

SECTION 8

ENGINE

This section includes the engine attachments (i.e. engine mount or base) the different engines used with the "72" models and the carburetors.

SECTION 9

MISCELLANEOUS

This section includes the special attachments, the tools and accessories related to the Moto-Ski snowmobile.

d) The information related to the different components shown in one illustration is included into a text (divided in 5 columns) located under or beside the illustration.

1 Column "Item".

Under this column, the reference number of a part shown in the illustration is listed.

2 Column "Number".

Under this column the number (6 digits) of the part is listed.

3 Column "Description".

Under this column, a short description of the part is given.

4 Column "Qty".

Under this column, the number of the same part required for one vehicle is given.

Note: The abbreviation "A.R." (as required) is sometimes used in this column.

5 Column "Application".

The vehicles or models on which a specific part is used are listed under this column. Since there are in "72" many different Moto-Ski models, a code system has to be used to identify these models. The symbols used in the code are:

B for Capri with J.L.O. (340 & 399) and B.S.E. (440).

B* for Capri with Hirth (292, 340 & 340E).

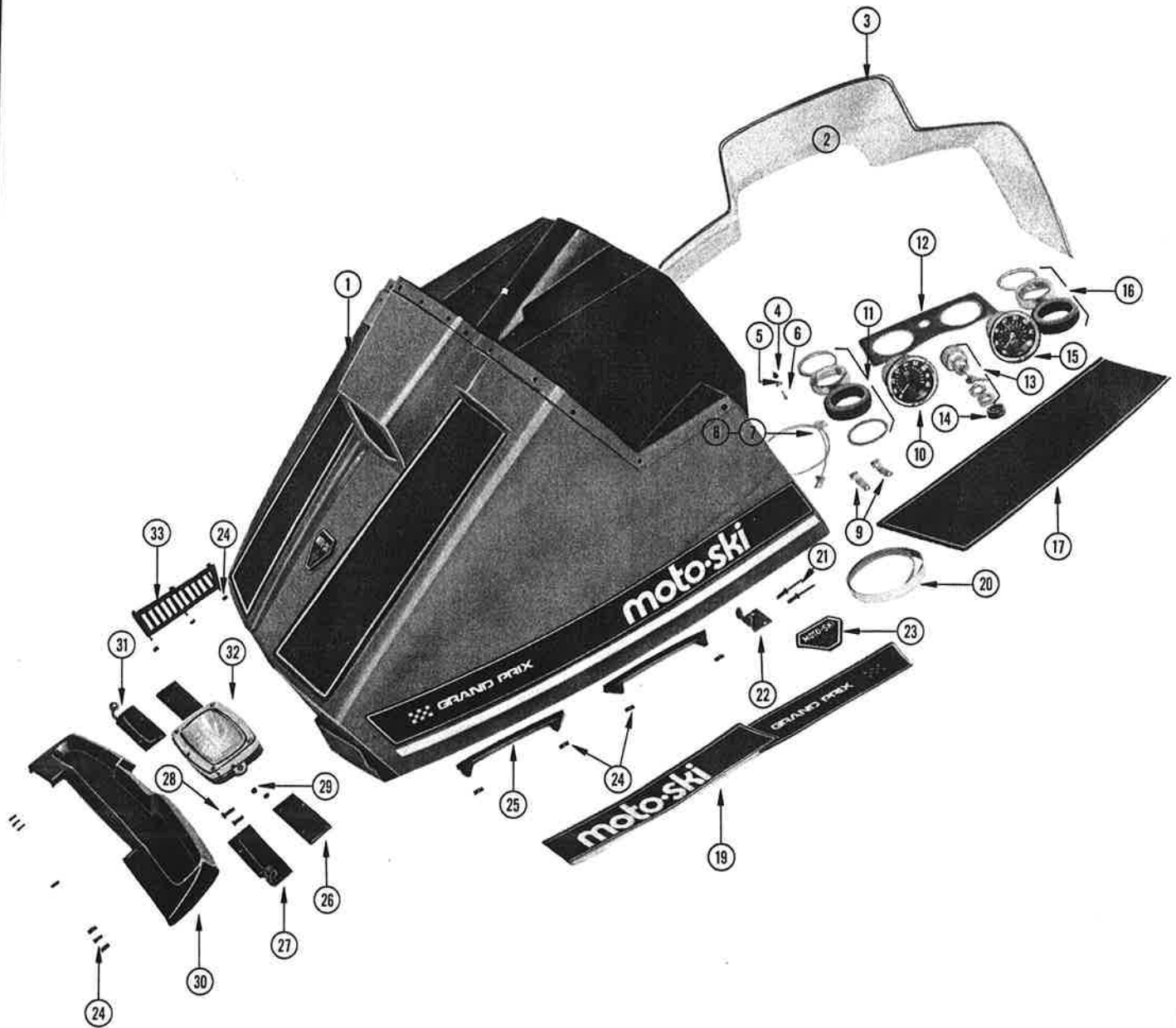
C for Zephyr with B.S.E. (440 & 440E).

C* for Zephyr with B.S.E. (340).

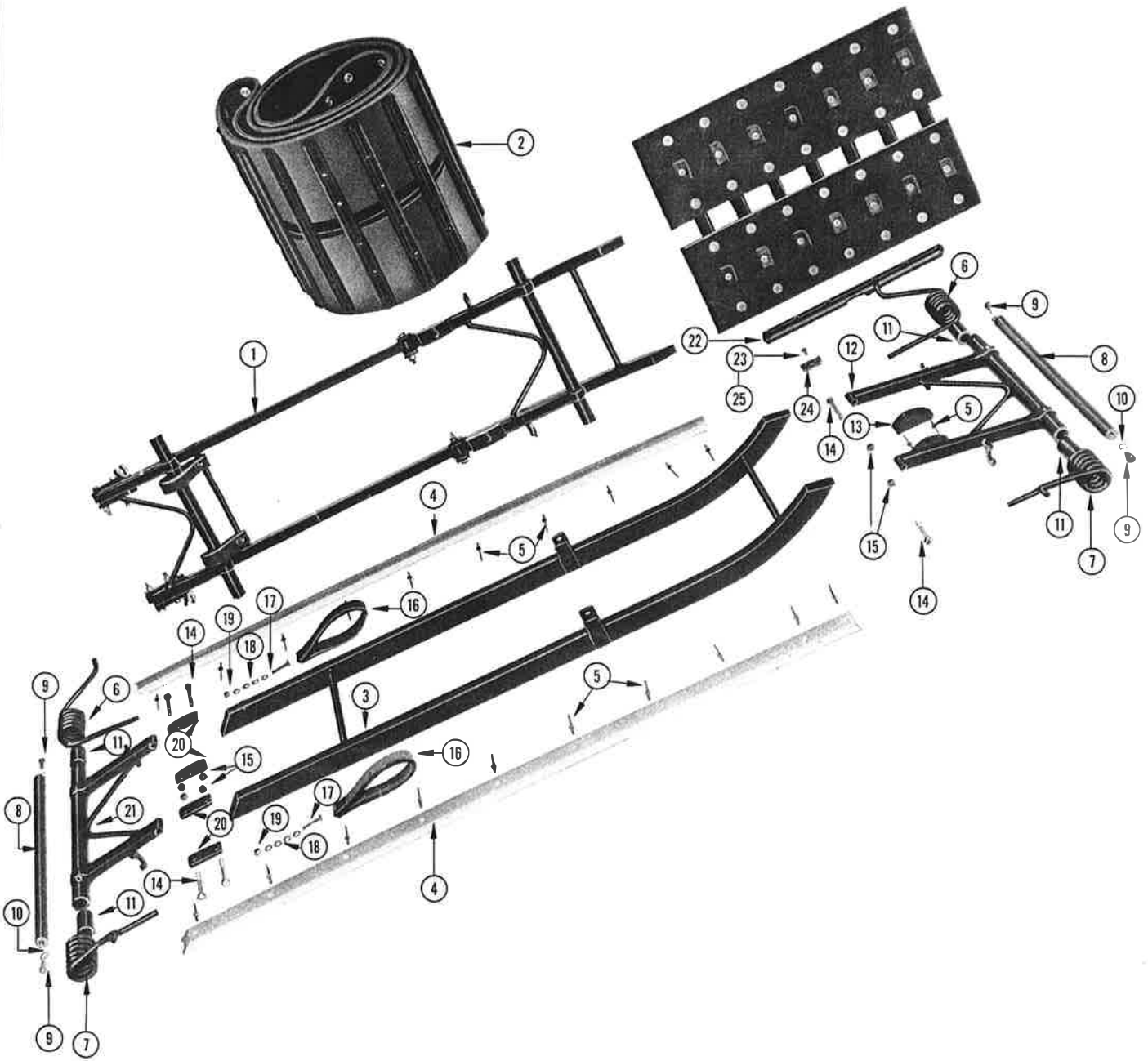
D for MS-18.

N for Grand Prix.

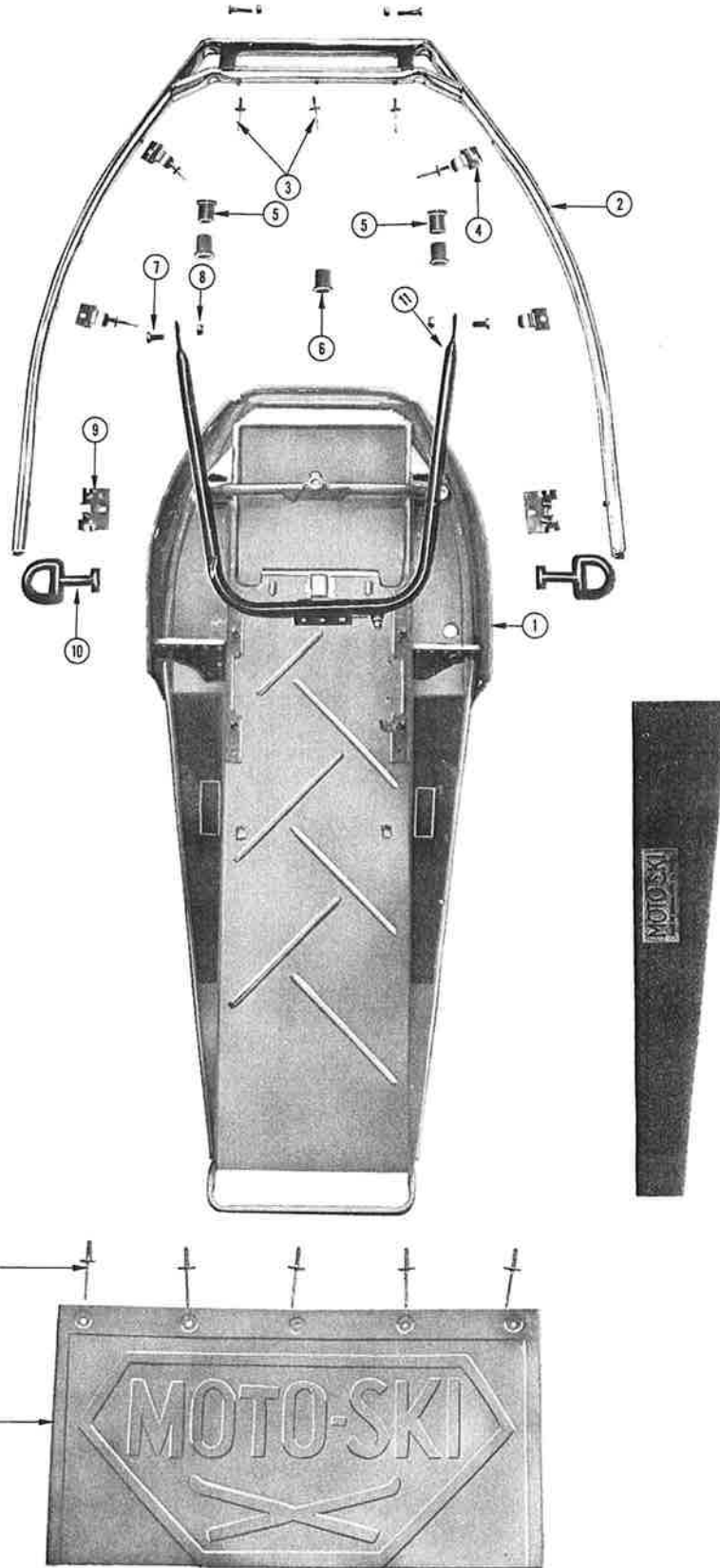
HOOD (GRAND-PRIX)



SLIDER SUSPENSION (GRAND-PRIX)



FRAME CADET

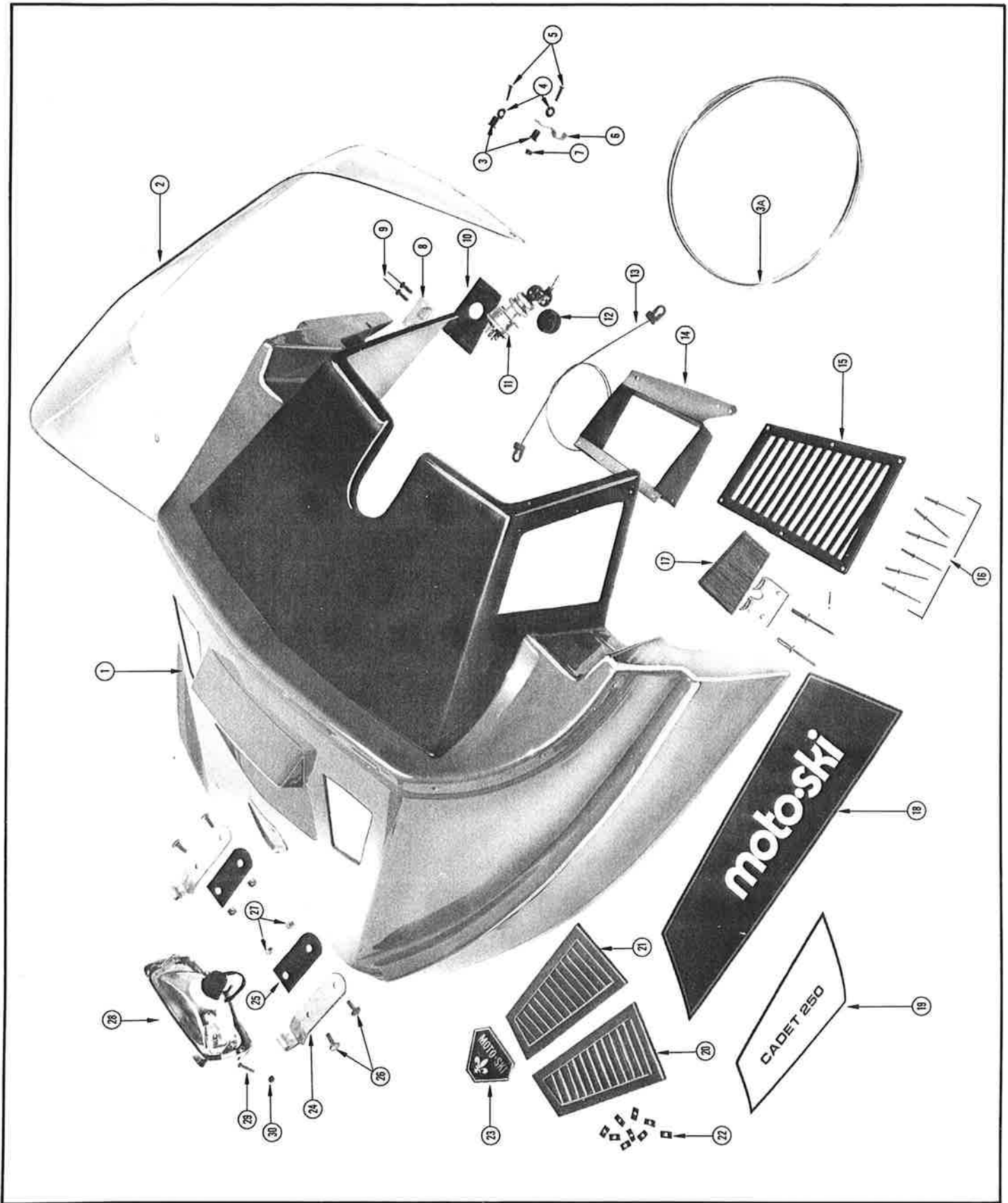


SEAT (CADET)

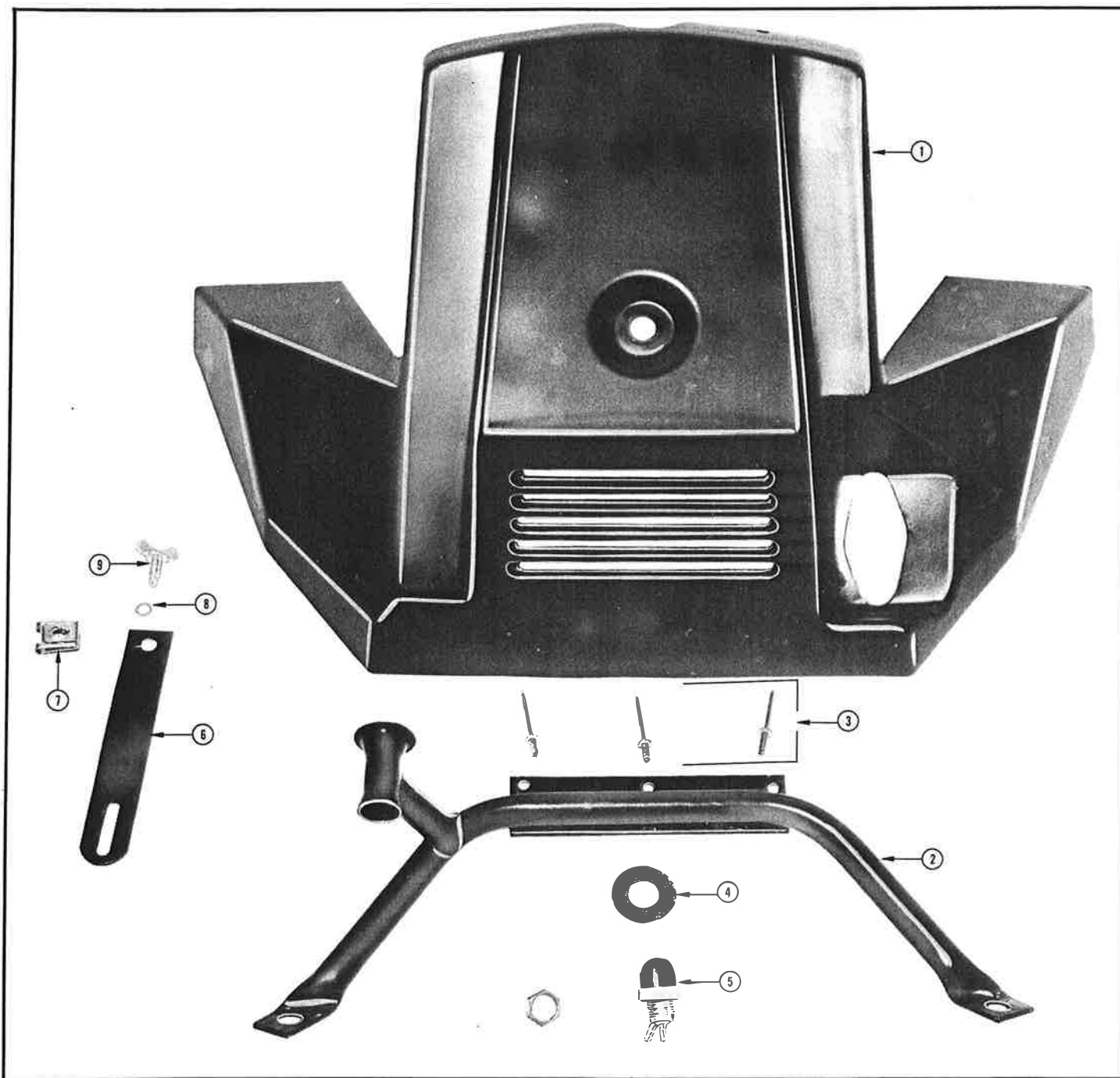


ITEM NUMBER	DESCRIPTION	QTY	APPLICATION	ITEM NUMBER	DESCRIPTION	QTY	APPLICATION
1	080043 SEAT ASS'Y MANUAL ONLY	1					
2	080052 SEAT COVER	1					
3	090044 SAFETY BELT	1					

HOOD CADET

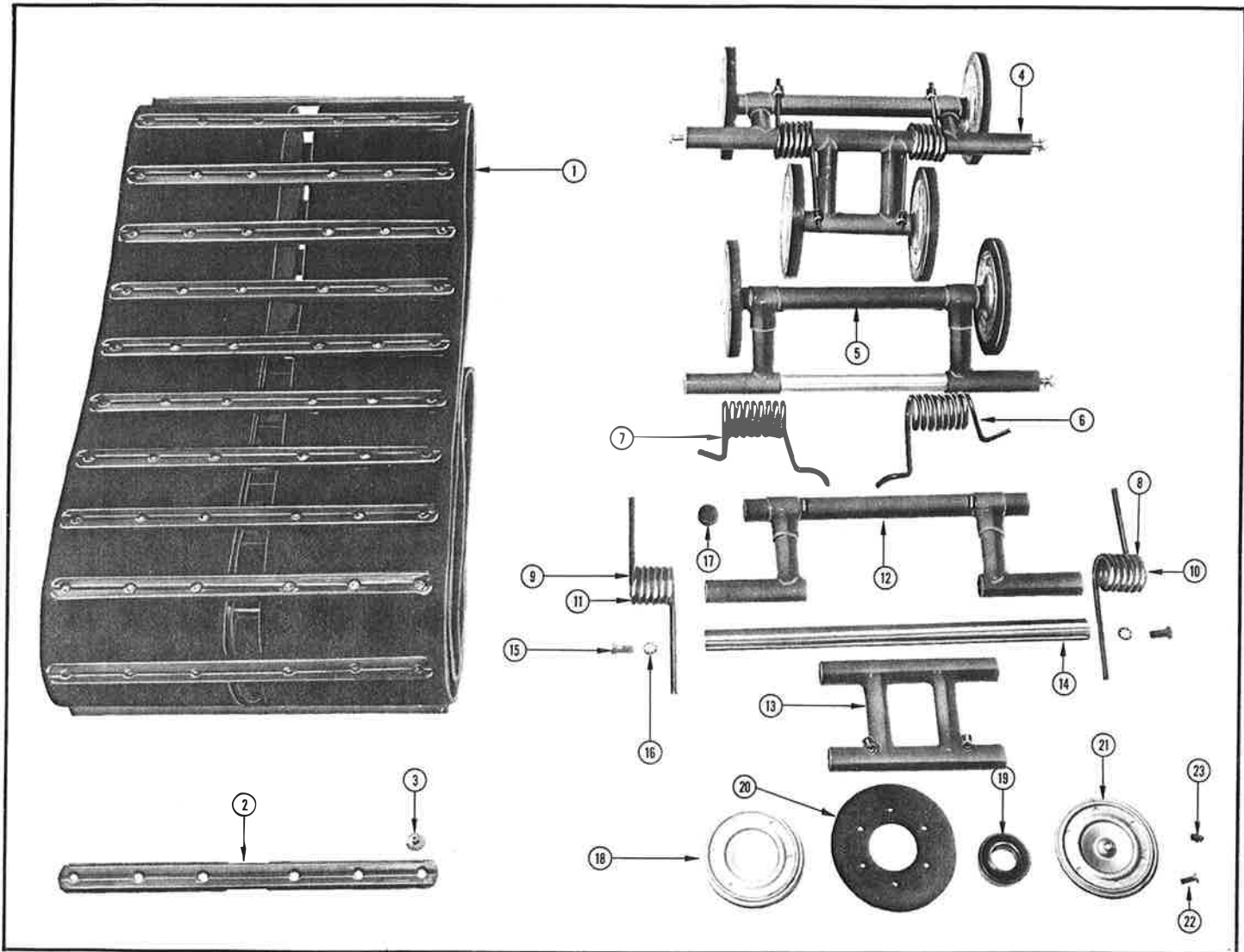


HOOD (CONSOLE) CADET

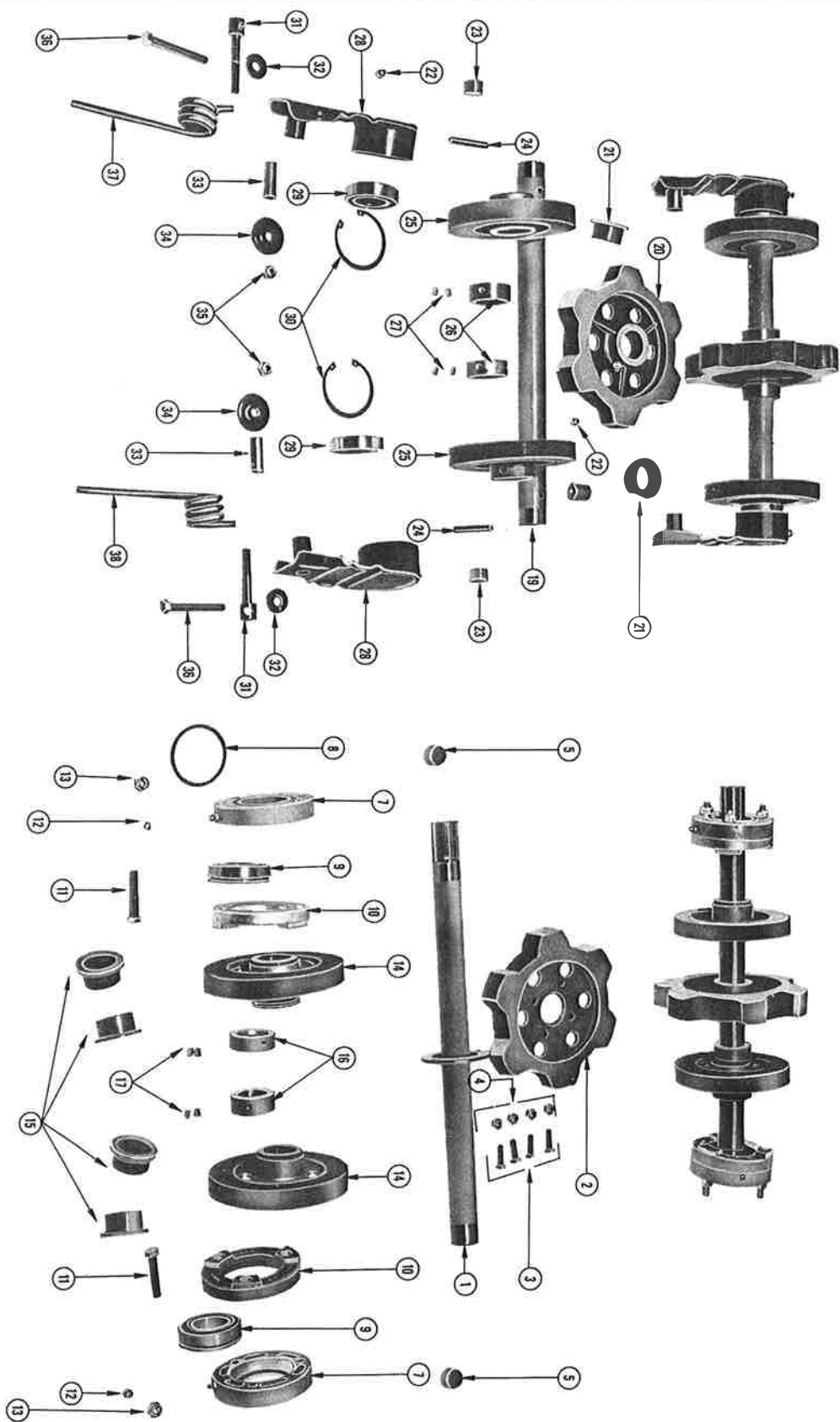


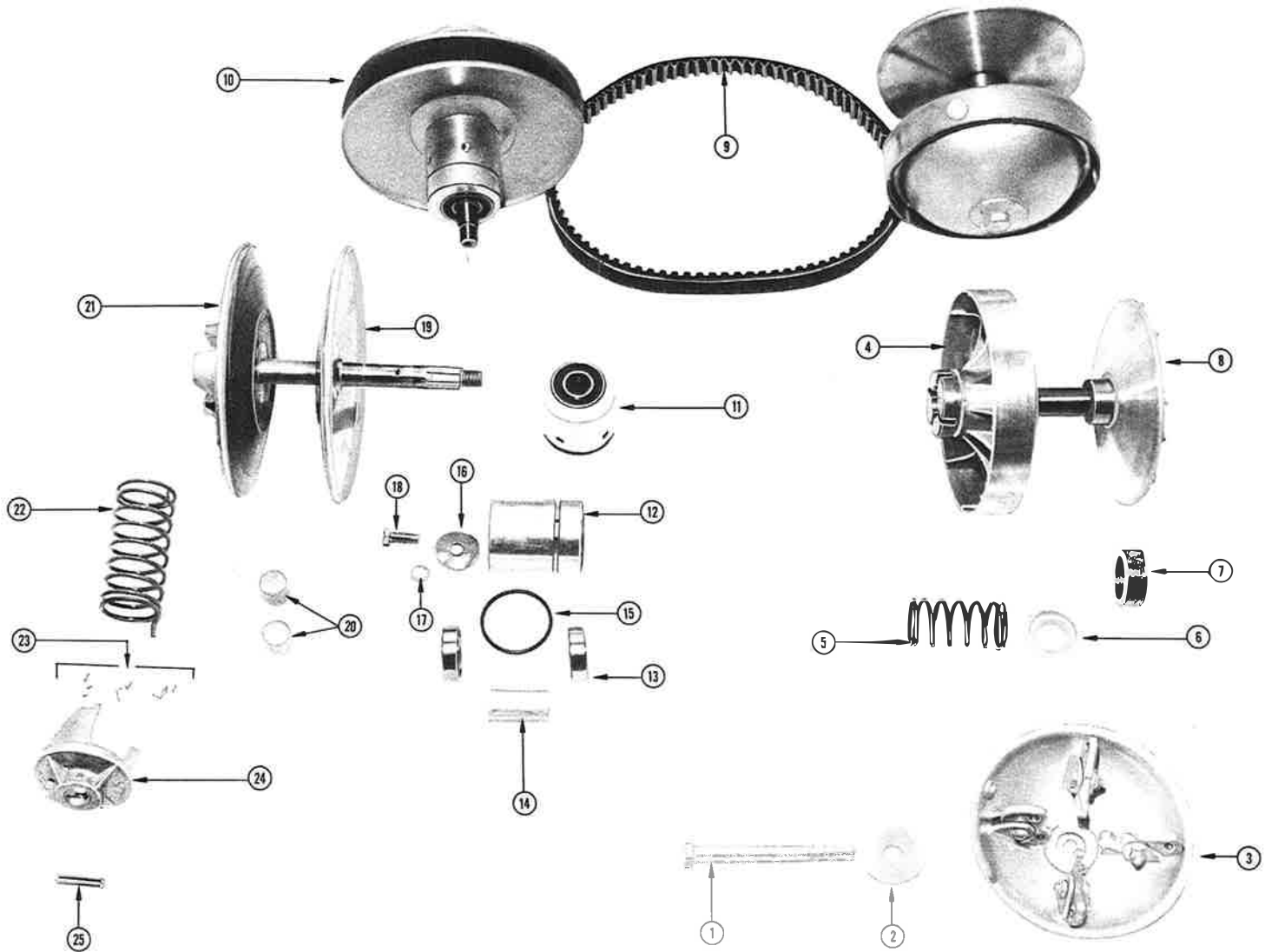
ITEM NUMBER	DESCRIPTION	QTY	APPLICATION	ITEM NUMBER	DESCRIPTION	QTY	APPLICATION
1	050041 CONSOLE	1		8	640017 RETAINER WASHER	1	
2	050057 CONSOLE SUPPORT (W.HINGE)	1		9	640025 THUMB SCREW	1	
3	630013 POP RIVET	3					
4	090005 PRIMER DECAL	1					
5	710016 PRIMER	1					
6	050063 CONSOLE RETAINING BRACKET	1					
7	640016 THUMB SCREW CLIP	1					

CADET TRACK & SUSPENSION

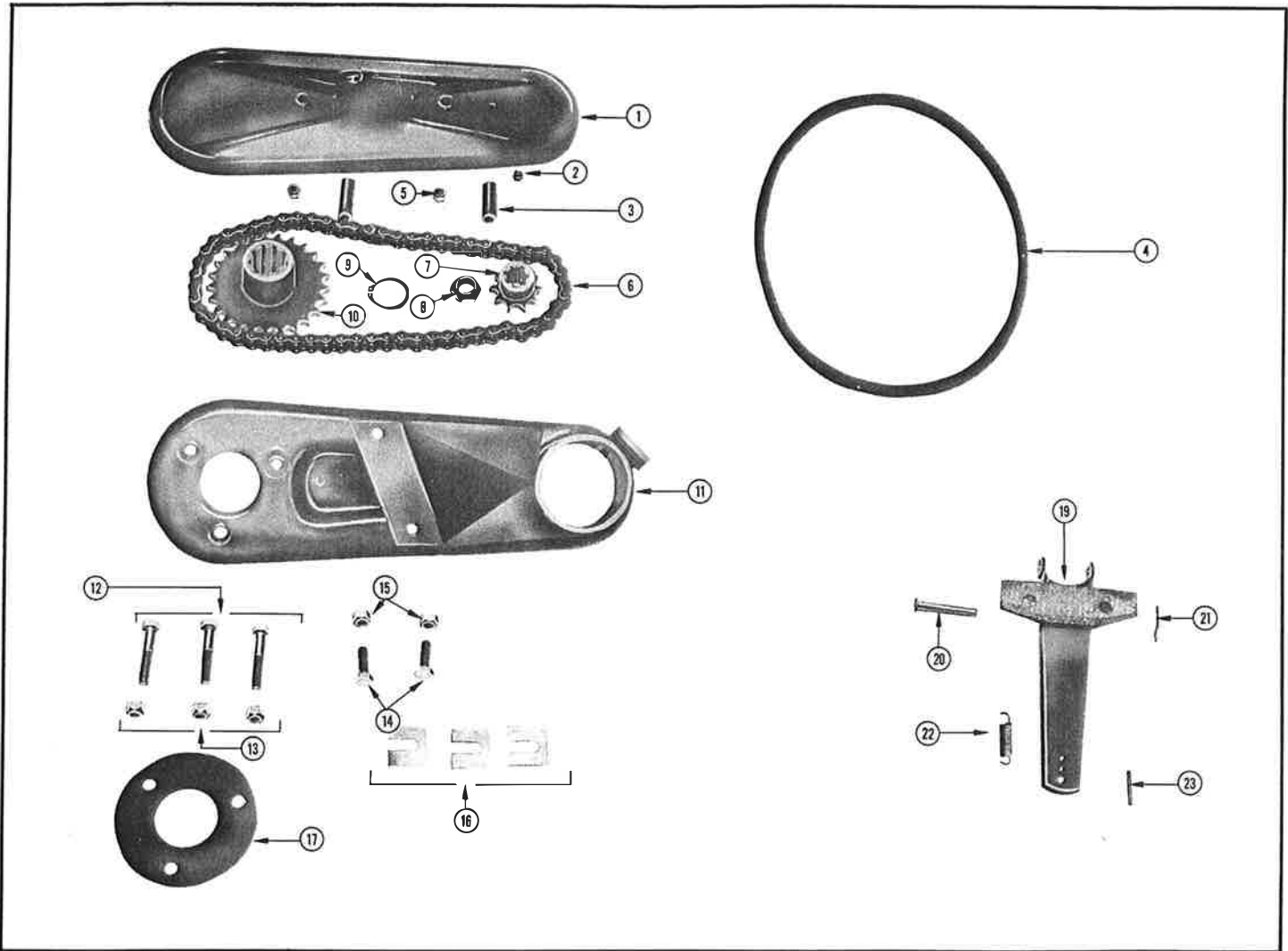


ITEM NUMBER	DESCRIPTION	QTY	APPLICATION	ITEM NUMBER	DESCRIPTION	QTY	APPLICATION
1	030056 TRACK	1		15	600033 BOLT	6	
2	030002 CLEAT	34		16	620010 STAR WASHER	6	
3	030004 RIVET (6 PER CLEAT)	204		17	710003 SUPPORT CAP	10	
4	030016 BOGGIE ASS'Y	2		18	030009 WHEEL INNER FLANGE	10	
5	031122 FRONT BOGGIE ASS'Y	1		19	660003 WHEEL BALL BEARING	10	
6	030062 FRONT BOGGIE SPRING (RIGHT)	1		20	030010 WHEEL TIRE	10	
7	030061 FRONT BOGGIE SPRING (LEFT)	1		21	030008 WHEEL OUTER FLANGE	10	
8	030042 CENTER BOGGIE SPRING (RIGHT)	1		22	030006 RIVET	60	
9	030043 CENTER BOGGIE SPRING (LEFT)	1		23	680001 GREASE FITTING	10	
10	030044 REAR BOGGIE SPRING (RIGHT)	1					
11	030045 REAR BOGGIE SPRING (LEFT)	1					
12	030038 BOGGIE LONG SUPPORT	3					
13	030033 BOGGIE SHORT SUPPORT	2					
14	030013 CROSS SHAFT AL.	3					





TRANSMISSION (CHAIN CASE & BRAKE) CADET



ITEM NUMBER	DESCRIPTION	QTY	APPLICATION	ITEM NUMBER	DESCRIPTION	QTY	APPLICATION
1	060015 CHAIN CASE COVER	1		16	060162 SPACER SHIM .062	AR	
2	680001 GREASE FITTING	1			060161 SPACER SHIM .035	AR	
3	060108 SPACER BUSHING	2			060160 SPACER SHIM .015	AR	
4	060119 COVER RUBBER SEAL	1		17	060112 RUBBER GASKET	1	
5	610023 NYLOCK NUT (1/4"-20)	2		18	060171 BRAKE ASS'Y	1	
6	060167 CHAIN (59 ROLLERS)	1		19	060144 SHOE'S LINING	1	
7	060321 UPPER SPROCKET (10T.)	1		20	060028 CLEVIS PIN	1	
8	610022 LOCK NUT	1		21	640007 CUTTER PIN	1	
9	640014 SNAP RING	1		22	060027 SPRING (RETURN)	1	
10	060031 LOWER SPROCKET	1		23	020060 SPRING SLEEVE	1	
11	060116 CHAIN CASE	1					
12	600046 BOLT 5/16-24x2"	3					
13	610015 NYLOCK NUT	3					
14	600032 BOLT 5/16-24x1 1/4"	2					
15	610015 NYLOCK NUT	2					